

# Boost Lab Productivity

## and Free Up Your Dedicated Hi-Throughput Stations

**USHIO**



Reduce Spills, Waste,  
Cleanup and Contamination



No Dedicated PC.  
Quick Results from Tablets



With USHIO's NEW

Photo Absorbance Sensor

# PiCOEXPLORER

The PiCOEXPLORER eliminates critical bottlenecks in laboratory processes.

### Free Up Dedicated Resources

- use anywhere, on a bench, under a hood
- quick results on one-off analyses

### No Pipettes or Cuvettes

- analyze directly in unopened PCR Tube
- reduced contamination risk
- no sample loss

### Mobile App Connectivity

- Bluetooth enabled
- free app for quick results on your mobile devices

### Super Affordable, Productive

- no special consumables
- multiple PiCOEXPLORERs at critical process points eliminate bottlenecks!
- compact and light weight

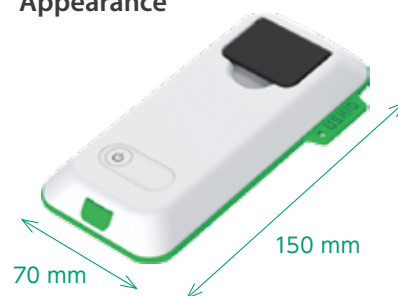
Your portable, personal PAS for Lab and field work.

## SPECIFICATIONS

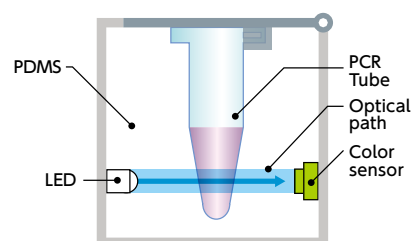
### PAS-110 Hardware Unit

Dimensions		70 x 150 x 30 mm (excluding protrusions)			
Weight		about 200g (including batteries)			
Power		<ul style="list-style-type: none"> <li>• 4.5V DC (3 AAA-type batteries)</li> <li>• 5V DC (micro-USB connector *1)</li> </ul>			
Battery Life		about 5 hours *2			
Usage Environment	Temperature/Humidity	5-35 °C, 70% RH or less			
	Altitude	2000 m or less			
	Installation Condition	indoor, pollution degree 2			
Measurement	Total Samples	1 sample			
	Time	1 second or more			
	Absorbance Range	0.02 or more (Gentian violet dilute solution)			
Sensor Unit	Light Source	White LED			
	Detector	Color Sensor	Maximum Absorption Wavelength	Wavelength Range	
			Red	615 nm	575-660 nm
			Green	530 nm	455-630 nm
Blue	460 nm	400-540 nm			
Communication Interface		Bluetooth low energy (Bluetooth smart) Class2			
Compatible Tablet		iPhone4-6, Nexus7(2013), Nexus9, ZenPad7.0 Z370C, Lavie Tab PC-TE508BAW, YT3-850F, XPERIA Z5 E6683 Dual, XPERIA Z5 Compact E5823, Galaxy SC-05G, Galaxy SM-A8000, Mediapad Ti 8.0 S8-701w, Sero8 pro F5281			
Recommended PCR Tube		WATSON brand 137-211C 0.2 mL			
Minimum Sample Volume		30 µL *3			

### Appearance



### Detector



\*1 Use the cable to connect to a computer or other appropriate power source to power the unit without batteries (the device automatically senses the power source; this connection cannot be used to transmit data.)

\*2 This battery life is based on using new, fully-charged batteries. However, battery life cannot be guaranteed as different operating conditions can alter battery life drastically.

\*3 With a sample volume of 30µL, be sure to measure with the device tilted 10° or less from the horizontal.

## Two types of calibration curve available: preset or simple generation

### To use a preset calibration curve

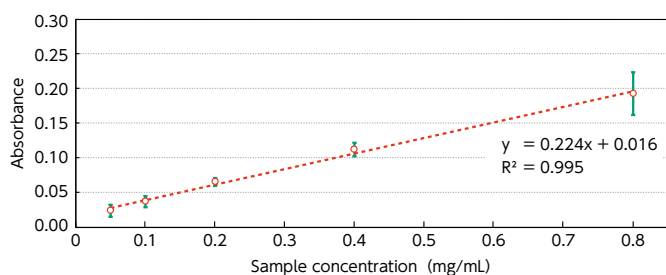


### To generate a calibration curve



## Calibration curves

### Protein Quantification with PiCOEXPLORER Bradford assay



**USHIO INC.**

picoexplorer@ushio.co.jp  
www.ushio.co.jp/en

