

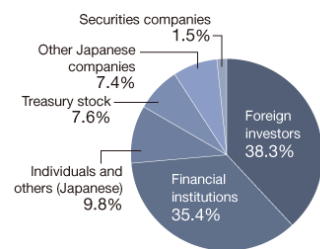
Investor Information

Stock Information (As of March 31, 2016)

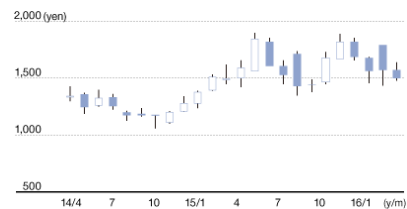
Stock Information

Total Number of Shares Issued	139,628,721
Number of Shareholders	11,951

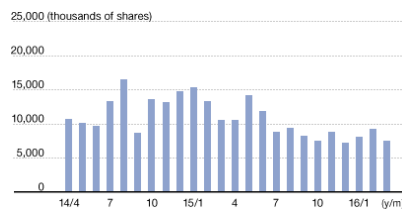
Composition of Shareholders



Stock Price Movement



Stock Turnover



Major Shareholders (Holding 2 million shares or more)

Name	Number of shares (1,000 shares)	Shareholding ratio (%)
The Master Trust Bank of Japan, Ltd. (Trust Account)	8,711	6.23%
Resona Bank, Limited.	6,471	4.63%
Japan Trustee Services Bank, Ltd. (Trust Account)	6,093	4.36%
STATE STREET BANK CLIENT OMNIBUS OM04	5,615	4.02%
Aioi Nissay Dowa Insurance Co., Ltd.	4,274	3.06%
The Bank of Tokyo-Mitsubishi UFJ, Ltd.	4,248	3.04%
JP MORGAN CHASE BANK 385174	3,924	2.81%
Asahi Mutual Life Insurance Co.	3,305	2.36%
Jiro Ushio	3,136	2.24%
STATE STREET BANK AND TRUST COMPANY 505001	2,464	1.76%
THE USHIO FOUNDATION	2,400	1.71%
STATE STREET BANK AND TRUST COMPANY 505103	2,275	1.62%
NORTHERN TRUST CO. (AVFC) RE SILCHESTER INTERNATIONAL INVESTORS INTERNATIONAL VALUE EQUITY TRUST	2,233	1.59%
NORTHERN TRUST CO. (AVFC) RE U.S. TAX EXEMPTED PENSION FUND	2,199	1.57%
NORTHERN TRUST CO. (AVFC) RE - SSD00	2,019	1.44%

* In addition to the above, the Company owns 10,647 thousand shares of treasury stock. These 10,647 thousand shares of treasury stock do not include 306 thousand shares of the Company's stock held in a trust account in connection with a stock-based compensation plan for executives.

* Each of the investment banks listed in the upper portion of the major shareholders table manages securities held primarily by Japanese institutional investors and is also the nominee for these investors. Trust accounts denote accounts that receive trusts such as pension trusts, investment trusts, and designated monies in trust from the institutional investors concerned.