

ESG Information



ESG Information

Central Objectives

The USHIO Group recognizes that realizing the vision set forth in its Management Philosophy and promoting sustainable growth of the Company and increasing corporate value over the medium to long term will bring satisfaction to all stakeholders. In order to achieve this goal, the Company strives to ensure the transparency and efficiency of corporate management and to reinforce corporate governance for realizing speedy and resolute decision making.

Corporate Governance Framework

At the Annual General Meeting of Shareholders on June 29, 2016, USHIO transitioned from a company with an audit & supervisory board structure to a Company with Audit and Supervisory Committee.

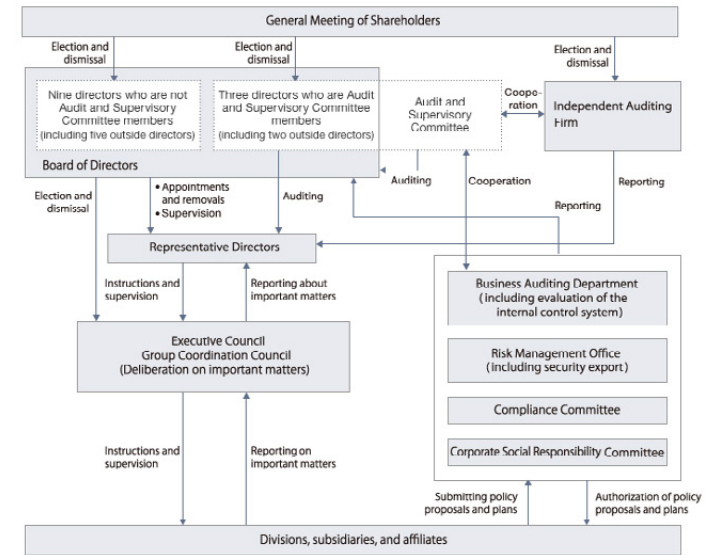
This transition will foster speedy decision-making by delegating decisions for certain important business matters from the Board of Directors to executive directors. It will also strengthen the supervisory function of the Board of Directors by ensuring that most of its members are outside directors. The new setup will also reinforce audit and supervisory functions by establishing an Audit and Supervisory Committee with the authority to assess the legality and validity of board members in performing their duties.

The Board of Directors comprises 12 directors. Nine are not Audit and Supervisory Committee members (including five outside directors) and three are Audit and Supervisory Committee members (including two outside directors). The Board of Directors oversees decision-making and business execution for top priority issues, including basic management policy.

Delegating decisions on certain important business execution to overseeing directors has accelerated decision-making. At the same time, the executive officer system has led to more accurate and speedier business execution. USHIO established the Executive Council and Group Coordination Council to discuss and report on priorities in business execution.

The Audit and Supervisory Committee which comprises three directors (including two outside directors) audits and oversees directors' performance of duties in line with its own audit and supervising standards. USHIO appointed a full-time Audit and Supervisory Committee member to enhance the efficacy of audits by collecting information from directors (excluding those who are also Audit and Supervisory Committee members) and employees and coordinating smoothly with the Internal Audit Department and independent Auditing Firm.

USHIO's Internal Control Framework



Stance on Corporate Governance Code

USHIO is reinforcing its corporate governance in line with the Corporate Governance Code of the Tokyo Stock Exchange. While it has yet to comply with the Supplementary Principle covering the analysis, evaluation, and disclosure of the Effectiveness of the Board of Directors, the Company recognizes the need to assess this area.

See the Corporate Governance Report for more details.

## ESG Information

### Message from a Director and Audit and Supervisory Committee Member

#### Message from Audit and Supervisory Committee Member Yoneda

As a director and Audit and Supervisory Committee member, I am especially careful to speak without hesitation from my own experience, beliefs, and philosophy. The most important aspect in carrying out the duties of an Audit and Supervisory Committee member is to coordinate closely with the Internal Audit Department, which is responsible for onsite audits. I am committed to strengthening the ability of the Internal Audit Department to gather and communicate information as the provider of information for making decisions, and to upgrading and improving the auditing environment.



Masanori Yoneda  
Outside Director  
Audit & Supervisory Committee Member

Meanwhile, I have high expectations of USHIO's initiatives to achieve the targets of its newly announced Medium-term Management Plan (fiscal 2016 to fiscal 2018). As every department and employee works in unison to execute the Company's measures, I aim to confirm their sense of commitment and the level of penetration and entrenchment of awareness among the key people in my auditing activities going forward.

#### Message from Audit and Supervisory Committee Member Yamaguchi

A year has passed since the Company made its transition to the Company with Audit and Supervisory Committee system in June 2016. Subsequently, I have been able to engage in lively discussion on the direction of corporate strategy and so forth, and to provide highly effective supervision of the management team and the directors from an objective standpoint as an independent outside director. At the same time, I have felt a definite increase in the speed of transformation.



Nobuyoshi Yamaguchi  
Outside Director  
Audit & Supervisory Committee Member

The Audit and Supervisory Committee's basic function is to audit the validity and effectiveness of business execution by each executive division. The committee coordinated with the Internal Audit Department to verify whether each workplace was operating in accordance with the Management Philosophy of the USHIO Group, and so forth. At the same time, the committee holds regular and ad hoc interviews with internal divisions such as the management team and subsidiaries.

As a director and Audit and Supervisory Committee member, I check that the Company's internal controls are functioning effectively, and strive to see that all of the management team have a common awareness of issues. As the USHIO Group works to fully realize the possibilities of light, I expect it to grow rapidly as a "light company" with an indispensable role in society.

### Stance on Directors Remuneration and Decision Making Approach

The remuneration system comprises monetary compensation and stock-based compensation consisting of a basic amount based on position and an amount determined based on operating performance and performance evaluation. Resolutions by the Board of Directors regarding remuneration are reached based on deliberation conducted in advance by the Remuneration Advisory Committee, which consists of a chairperson and a majority of outside director members. This composition is from the perspective of ensuring fairness and appropriateness regarding the remuneration system and standards and the assessment of contribution to the Company's operating performance.

#### Total Remuneration and Other Payments by Director Category, Total Amounts by Types of Remuneration, and Other Payments and Number of Eligible Directors

Director categories	Total remuneration and other payments (millions of yen)	Total amounts types of remuneration and other payments (millions of yen)					Number of eligible directors
		Basic compensation	Stock options	Bonuses	Stock-based compensation for directors	Retirement benefits	
Directors (excluding outside Audit and Supervisory Committee members, directors)	271	249	—	—	21	—	8
Directors (Audit and Supervisory Committee members) (excluding outside directors)	20	20	—	—	—	—	1
Audit and Supervisory Committee members (excluding outside members)	7	7	—	—	—	—	2
Outside directors	51	51	—	—	—	—	10

Note: Stock-based compensation for directors is based on expenses recorded in the consolidated financial results for the fiscal year ended March 31, 2017, under Japanese GAAP.

## ESG Information

**Internal Auditing and the Audit and Supervisory Committee Audits**

The Internal Audit Department performs on-site audits to check the appropriateness of operational controls and procedures. The department submits an annual audit plan to the Audit and Supervisory Committee and explains its specific auditing policies. It also reports as necessary to the committee on the results of internal audits.

The Independent Auditor submits annual plans to the Audit and Supervisory Committee and explains its specific auditing policies. It also presents reports summarizing reviews and audit results for quarterly reviews and accounting audits for quarterly and year-end results.

The Audit and Supervisory Committee, Internal Audit Department and independent auditor exchange information and opinions and cooperate with each other.

**Compliance**

USHIO has established "10 Action Guidelines" in order to define standards for behavior that require everyone at the Group to comply with laws, regulations, the Articles of Incorporation, and Management Philosophy. The Compliance Committee is responsible for ensuring that employees observe these guidelines. The Business Auditing Department and Compliance Committee jointly perform audits to monitor the status of compliance and submit audit reports as necessary to the Board of Directors and Audit and Supervisory Committee. Furthermore, information involving the performance of directors' duties is recorded, stored, and managed, in documentary and electronic formats. This enables the directors and Audit and Supervisory Committee members to view the information at any time and take timely and appropriate action as required.

To reinforce awareness of the importance of compliance, all Group companies use USHIO's standards for behavior and other guidelines and the Business Auditing Department performs audits of the Group companies.

**Risk Management**

In its risk management regulations, USHIO has specified departments responsible for respective risk categories, including compliance, the environment, product quality, finance, legal matters, natural and other disasters, information management, and export controls. Each responsible department is to establish rules and guidelines, conduct training, and produce and distribute manuals and so forth. When a new risk emerges, a director or an executive officer is to be promptly appointed to take responsibility for handling it. Furthermore, if a risk materializes and is expected to incur significant damage, the responsible director or executive officer is to report it promptly to the Board of Directors.

**USHIO Acquires and Holds a Variety of Information in the Course of Conducting its Business Operations.**

We are well aware of the importance of safeguarding information about customers and suppliers, personal information, confidential business information and other important information, and have established rules for the proper handling of this information. There are stringent requirements concerning the protection of confidential information, whether the information is internal or related to a customer or business partner. Another priority is compliance with Japan's Personal Information Protection Law.

To reinforce everyone's commitment to complying with this law and ensure its effective enforcement, all USHIO departments use a cycle of self-assessments to determine the status of compliance and carry out continuous improvements based on these assessments. IC cards are one way that the USHIO protects information. We use these cards to keep track of when employees enter and leave particular rooms and record their working hours. IC cards restrict access to sensitive areas and keep records of when employees enter these areas, which helps prevent unauthorized access to important information. We also take measures to strengthen device security, preventing inappropriate access from any but designated devices (PCs, tablets, smartphones) to reduce the risk of information leaks. Using servers for the centralized oversight of computer software assets and computer virus protection is another measure that protects information, which upgrades our ability to manage information while reducing the amount of time and resources needed. For confidential information received from customers and suppliers, we have regulations covering every step from the receipt and storage of information to its ultimate disposal and perform periodic checks of the system. Customers and business partners perform on-site confirmations of our information security measures. We study the results of these confirmations to reexamine and reinforce information security measures and how they are used.

ESG Information

Directors

Directors (As of June 29, 2017)



**Jiro Ushio**  
Chairman and USHIO Group Representative



**Kenji Hamashima**  
President and Chief Executive Officer



**Sakie T. Fukushima**  
Outside Director



**Nobuyuki Kobayashi**  
Director (Audit & Supervisory Committee Member (Full-time))



**Shiro Ushio**  
Director Chairman, USHIO LIGHTING, INC.



**Hiroaki Banno**  
Director General Manager, SSLS Headquarters



**Masanori Yoneda**  
Outside Director (Audit & Supervisory Committee Member)



**Nobuyoshi Yamaguchi**  
Outside Director (Audit & Supervisory Committee Member)



**Tadashi Nakamae**  
Outside Director



**Yoshinari Hara**  
Outside Director

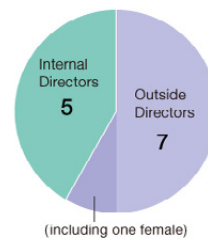


**Yasufumi Kanemaru**  
Outside Director



**Shuichi Hattori**  
Outside Director

Board of Directors



Director and Audit & Supervisory Committee Members

