

Laboratory

Protein Quantification with PiCOEXPLORER (BCA assay)

Overview Calibration curves are generated using PiCOEXPLORER (USHIO, PAS-110) and NanoDrop1000 (Thermo Scientific).

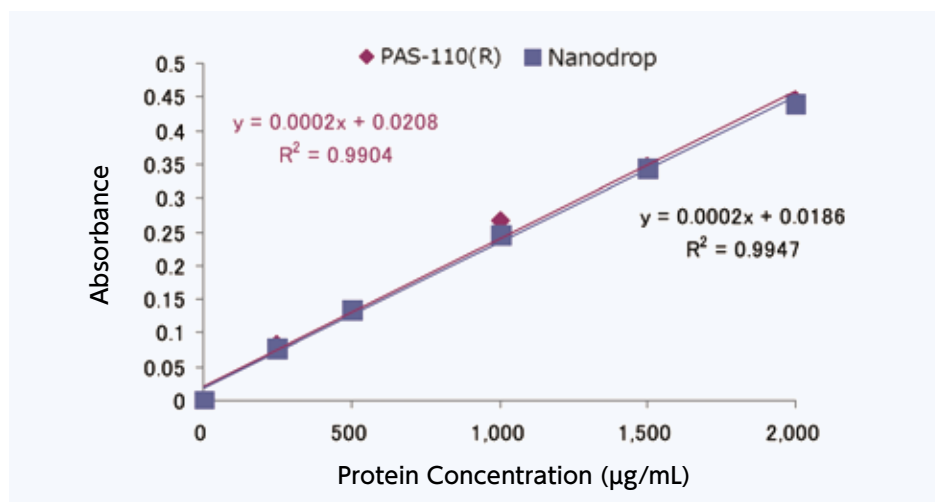
Reagent Pierce™ BCA Protein Assay Kit Thermo Fisher Scientific.
Note: BCA stands for Bicinchoninic Acid Assay.

Procedure

- 1) Dispense 25 µL of test sample solution into a 0.2-mL PCR tube
- 2) Add 200 µL of BCA reagent to the test sample solution
- 3) Incubate for 30 min at 60 degrees C
- 4) Quantify the protein content in the sample by using PAS-110 (R) and NanoDrop1000 to generate calibration curves.

*Wavelength range (Color sensor R) : 575-660 nm

Calibration Curves



Result PiCOEXPLORER is applicable to the BCA assay.

Measurement Partner Biochemistry Process Study Group, Advanced Manufacturing Research Institute, National Institute of Advanced Industrial Science and Technology

Features of PiCOEXPLORER

- Boost Lab Productivity. Absorbance measurement with PiCOEXPLORER. Wavelength range: 400 - 660 nm
- Your portable, personal tool for Lab work and Field work. Analyze directly in unopened PCR tube (0.2 ml). No sample loss, easy to dispose.
- Free app for quick results and calibration curves on your smartphone, tablets. Save raw data (absorbance, concentration, intensity) in Excel file on your PC.

