

INVESTOR INFORMATION



Total Number of Shares Issued (As of March 31, 2015)

139,628,721

Number of Shareholders

13,242

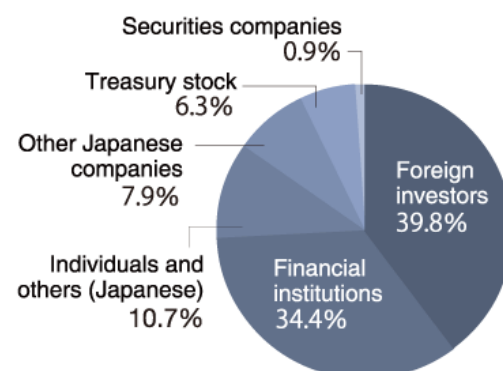
Major Shareholders (Holding 2 million shares or more)

Name	Number of shares (1,000 shares)	Shareholding ratio (%)
The Master Trust Bank of Japan, Ltd. (Trust Account)	8,947	6.40
Japan Trustee Services Bank, Ltd. (Trust Account)	5,752	4.12
STATE STREET BANK CLIENT OMNIBUS OM04	5,293	3.79
Aioi Nissay Dowa Insurance Co., Ltd.	4,274	3.06
The Bank of Tokyo-Mitsubishi UFJ, Ltd.	4,248	3.04
JP MORGAN CHASE BANK 385174	4,180	2.99
Resona Bank, Limited.	3,616	2.58
Asahi Mutual Life Insurance Co.	3,305	2.36
Jiro Ushio	3,226	2.31
STATE STREET BANK AND TRUST COMPANY 505001	2,949	2.11
Japan Trustee Services Bank, Ltd. (Sumitomo Mitsui Trust Bank, Limited retrust portion/Resona Bank, Limited. Retirement Allowance Trust Account)	2,911	2.08
RBC IST 15 PCT LENDING ACCOUNT-CLIENT ACCOUNT	2,676	1.91
THE USHIO FOUNDATION	2,400	1.71
STATE STREET BANK AND TRUST COMPANY 505103	2,308	1.65

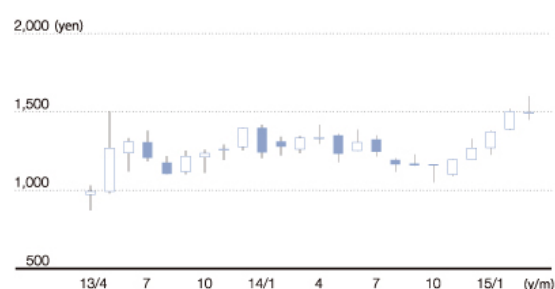
※ In addition to the above, the Company owns 8,819 thousand shares of treasury stock.

※ Each of the investment banks listed in the upper portion of the major shareholders table manages securities held primarily by Japanese institutional investors and is also the nominee for these investors. Trust accounts denote accounts that receive trusts such as pension trusts, investment trusts, and designated moneys in trust from the institutional investors concerned.

Composition of Shareholders



Stock Price Movement



Stock Turnover

